

# 39EXPRESS

SPRING 2022

## Wilmette Sesquicentennial

### A Message from the Superintendent



Spring has arrived and we can feel the positive vibes emanating from our teachers, staff and, most of all, from our students! While we continue to keep a close eye on COVID-19 in our learning community, our mitigation off-ramp has given us a path to more familiar conditions within our buildings while also maintaining our commitment to health and safety for our students and staff. We are certainly looking forward to enjoying more time outdoors as the weather improves.

One thing that has not changed during this topsy-turvy time is our unwavering commitment to providing a first-class educational experience. We understand that the uncertainty and ever-changing conditions of the last two years has affected each student and staff member differently, and we remain committed to supporting each and every person's success. Despite the well-documented changes and challenges, we are proud to have maintained the high standards for academic progress as illustrated by our NWEA MAP data and we have implemented systems for those who need additional support for recovery. This is a tribute to the outstanding work of our faculty and staff as well as to the strong partnership with our D39 families. These collaborative relationships allow our students to thrive and be successful as we prepare for the next steps of their educational journey.

As we enter the home stretch of the 2021-2022 school year, the partnerships between teachers, staff, parents and students is instrumental in continuing to elevate District 39 and our students' many successes. Helping every student flourish remains our collective focus and by working together and supporting one another, we achieve our goals in spades. Thank you for your partnership and support.

Your partner in education,

Kari Cremascoli, Ph.D.  
Superintendent of Schools  
Wilmette Public Schools District 39

Throughout the month of April, all six schools in District 39 hosted a history walk with fun facts, pictures, and information about how that school helped form the 150-year history of Wilmette! As a part of the walk, families were invited to participate in two accompanying activities: a scavenger hunt, and the design of a Wilmette village seal. If you would like to learn about the history of our schools, you can request a copy of each school's tour by emailing [communications@wilmette39.org](mailto:communications@wilmette39.org).



### Stay Connected



**Social Media:** Follow us @Wilmette39 on Facebook, Twitter and Instagram.

**Neighborhood Lists:** Visit [www.wilmette39.org/neighbor](http://www.wilmette39.org/neighbor) to subscribe to our local neighbor email lists in order to keep up with the D39 school news going on in your community.

**Email:** Email us at [communications@wilmette39.org](mailto:communications@wilmette39.org) with your questions, feedback and suggestions.

# Preparing Our Students for the Future

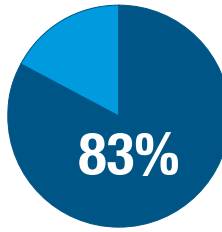
The Illinois Assessment of Readiness (IAR) is a state-mandated assessment administered to students in grades 3-8 that measures students' mastery of learning standards in math, and English language arts and their readiness for the future. The IAR assessment was designed to test student knowledge of key concepts, critical thinking, reasoning, research, communication, and problem-solving skills

IAR uses a five-level system for breaking down student performance toward grade-specific standards:

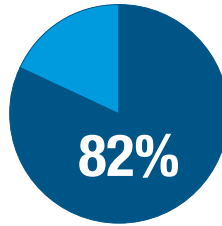
- Level 1: Did not meet expectations
- Level 2: Partially met expectations
- Level 3: Approaching expectations
- Level 4: Met expectations
- Level 5: Exceeded expectations

# Student Achievement Through MAP

Student growth is a critical component to Wilmette Public Schools' education. District 39 administers the Measures of Academic Progress (MAP) to students in grades 2-8 as a means of measuring student achievement, growth, and learning readiness in the areas of reading and math.



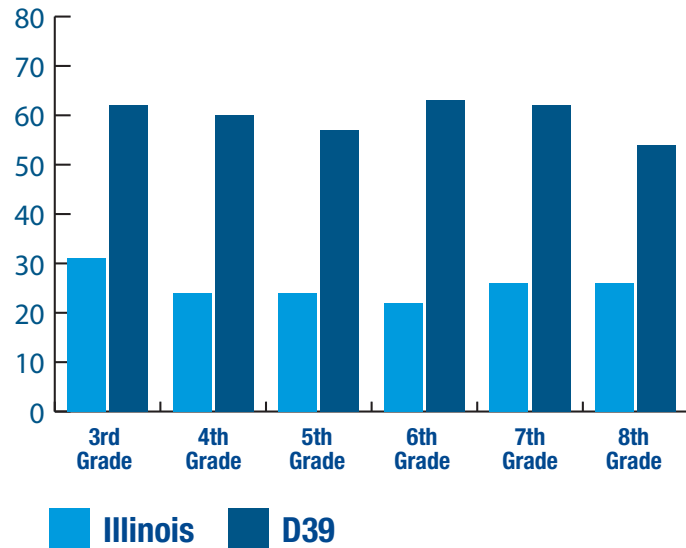
83% of D39 students achieved at average or above levels nationally in Math from Fall 2020 to Spring 2021



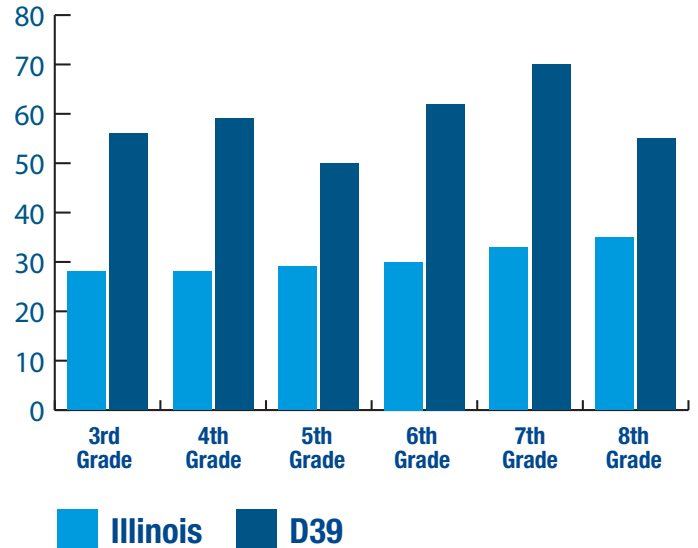
82% of D39 students achieved at average or above levels nationally in Reading from Fall 2020 to Spring 2021

## Percentage of Students Who Met or Exceeded State Standards (Levels 4 and 5)

### Math Results



### English Language Arts Results



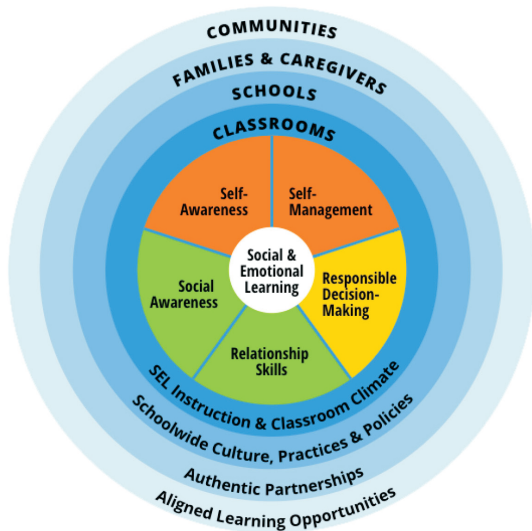
Illinois figures are preliminary analysis from Spring 2021. Due to the pandemic, Districts had the option of doing IAR in Spring or Fall of 2021.

# District 39 and Social Emotional Learning

Social Emotional Learning (SEL) is an important part of our well-rounded District 39 curriculum and instruction, ensuring that students have the support and opportunities to heal, learn, grow, and be socially and emotionally supported and/or challenged academically. D39's SEL curriculum follows the framework outlined by the Consortium for Academic, Social and Emotional Learning (CASEL), which was developed to support equitable educational opportunities for all students. For more information on CASEL, please visit their website at [www.casel.org](http://www.casel.org).

## The District 39 SEL framework is organized around the core CASEL (*Collaborative for Academic, Social, and Emotional Learning*) competencies:

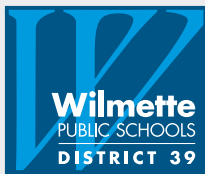
- Relationship Skills
- Self-Management
- Self-Awareness
- Social Awareness
- Responsible Decision Making
- Diversity, Equity, Inclusion



## Responsive Classroom®

In addition to the lessons contained in the D39 Social-Emotional Learning Framework, a common approach to building classroom community will be used, based on the foundational tenets of Responsive Classroom. Students will participate in Morning Meeting (Grades K-4) or Responsive Advisory Meetings (Grades 5-8) and will be a part of a classroom community built on the core beliefs and practices of Responsive Classroom. All lessons and practices from both are embedded throughout the school day, and are not taught in isolation.





39 exPRESS is published by the District 39 Board of Education to provide information to local citizens about educational programs and activities. 39 exPRESS is printed on recycled paper.

Mikaelian Education Center  
615 Locust Road  
Wilmette, IL 60091  
(847) 512-6000  
www.wilmette39.org

NON-PROFIT ORG.  
ECRWSS  
U.S. POSTAGE PAID  
WILMETTE, IL  
60091  
PERMIT NO. 93

## POSTAL PATRON LOCAL

The District 39 Educational Foundation, a 501c(3) non-profit organization, raises funds for projects that expand, enrich, and complement educational opportunities for the students, staff, and community in District 39. Visit us online at [d39foundation.org](http://d39foundation.org) for more information about our organization.

### Gripp Grants

The District 39 Educational Foundation grants funds for innovative educational programs, experiences, and technologies that expand, enrich, and complement the schools' curricula. Grant applications are welcome from anyone – teachers, staff, parents and students in District 39 – or any organization that makes a proposal consistent with the mission of the Foundation. Our grant program is named in memory of D39 teacher and founding Foundation Board Trustee Phyllis Gripp.

This spring, the Educational Foundation awarded two Gripp Grants totaling \$15,519 to 12 teachers across all four elementary schools. These grants will fund the purchase of two Railyard Fitness Systems, to be used across our four elementary schools, and 40 Sphero indi robots, eight for each of our elementary schools and the Lechner Early Education Program (LEEP).

These grants address the need for children to be active and move their bodies in new and innovative ways as well as introducing our youngest learners to coding and preparing them for more complex coding projects throughout their educational journey.

